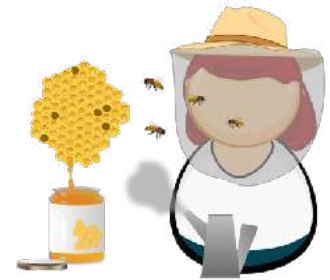




HONEY

Arrange the words in the correct order

1. home. I'm honey, hello _____
2. very honey sweet. is _____
3. for honey you. is good _____
4. jar. the in honey is the _____
5. for toast and breakfast. honey _____
6. uses she of always honey. a lot _____
7. honey she the licked off spoon. the _____
8. sugar. we use can instead honey of _____
9. for honey, will me? shopping you go _____
10. the land Australia milk is and of honey. _____
11. tea little people a like to honey their put in.



12. in honey put the I morning, like my to toast on.



True/False Questions

1. Bees store honey in flowers. _____
2. The queen bee lays eggs. _____
3. It's interesting to be a bee. _____
4. Drones gather nectar from flowers. _____
5. Creamed honey is liquid. _____
6. Bees are happy being bees. _____
7. A swarm forms when bees migrate. _____

Short Answer Questions

1. What does a beekeeper do? _____
2. Where do bees store honey? _____
3. What is the role of the queen bee? _____
4. What type of bees collect pollen? _____
5. What happens when bees migrate? _____

Teacher's Key

1. Hello honey, I'm home.
2. Honey is very sweet.
3. Honey is good for you.
4. The honey is in the jar.
5. Toast and honey for breakfast.
6. She always uses a lot of honey.
7. She licked the honey off the spoon
8. We can use honey instead of sugar.
9. Honey, will you go shopping for me?
10. Australia is the land of milk and honey.
11. People like to put a little honey in their tea.
12. In the morning, I like to put honey on my toast.

True/False Questions

1. Bees store honey in flowers. (False)
2. The queen bee lays eggs. (True)
3. Drones gather nectar from flowers. (False)
4. Creamed honey is liquid. (False)
5. A swarm forms when bees migrate. (True)

Short Answer Questions

1. What does a beekeeper do?

A beekeeper manages and maintains beehives, caring for the bees, extracting honey, and ensuring the health of the colony.

2. Where do bees store honey?

Bees store honey in the honeycomb cells within the beehive.

3. What is the role of the queen bee?

The queen bee lays eggs, producing new bees, and is the central figure in the social hierarchy of the colony.

4. What type of bees collect pollen?

Field bees collect pollen from flowers.

5. What happens when bees migrate?

When bees migrate, they form a swarm, leaving their original hive to establish a new colony, often with a new queen bee.