

Main - Activity 1



ACTIVITIES AND LOCATION

1. Times of frequency. Write them on the board:

5 days a week – always

3 out of 5 days – usually

2 out of 5 days – sometimes

0 out of 5 days – never

Ask the students:

Question: 'How often do you go to the movies?'

Answer: 'I [TIME OF FREQUENCY] go to the movies.'

Question: 'Do you ever play basketball?'

Answer: 'No, I never play basketball.'

Pair the students. Use handout 1 to practice the conversation. Use 'time of frequency'. Swap roles. You can also write your answer in the third column.

Handout 1

Use 'time of frequency' and ask your partner the questions.

'How often do you...?'

Use: **always**
 usually
 sometimes
 never

How often do you...	How often do you...	I _____...
do exercise	take a walk	
go swimming	do further studies	
buy tickets for a concert	book my vacation	
watch a movie	drink tea	
buy a book	borrow a book	
catch a flight	buy meat	
buy fresh vegetables	buy pen and paper	
buy groceries	buy medicine	
deposit money	get sick	
drink a beer	go to school	
buy clothes, shoes, cosmetics	play computer games	
take your child to play with other children	buy bread and cookies	
enjoy a cup of coffee	enjoy many rides and have fun	
go for a haircut	do house chores	
catch a bus	take a train	

Handout 2

Where do we do it?

We do activities at certain locations.

Practice this conversation.

Question: 'What do we do in a bookstore?'

Answer: 'We buy books in a bookstore.'

Question: 'Where do you buy your books?'

Answer: 'I buy them at the book store.'

Question: 'Where do you do your exercises?'

Answer: 'I walk in the park.'

You can also use 'times of frequency' in your conversations.

Question: 'Do you always buy books at the same bookstore?'

Answer: 'No. I sometimes go to the bookstore at my university.'

Question: Do you always do your exercises in the same park?'

Answer: 'Yes. The park is near my house.'

'I often walk in the park.'

or

'I sometimes walk in the park.'

Practice the above.

Handout 3

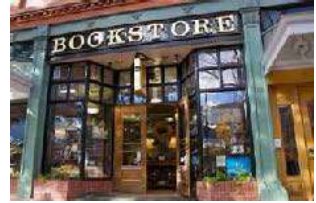
Use Handout 1 and match the activity with its location



Tea house



Department store



Bookshop



Travel agent



Supermarket



Stationery shop



University



Hospital



Train station

Handout 3

Use Handout 1 and match the activity with its location



Bus stop



Airport



Butcher



Pharmacy



Cinema



Hair Salon



Ticket Office



Park



Library

Handout 4

Use Handout 1 and match the activity with its location



ATM



Gym



Theme Park



Stationery shop



Green Grocer



School



House chores



Swimming pool



Kindergarten

Handout 5

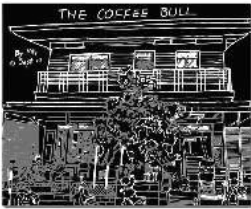
Use Handout 1 and match the activity with its location



Pub



Bakery



Coffee shop



Games room