

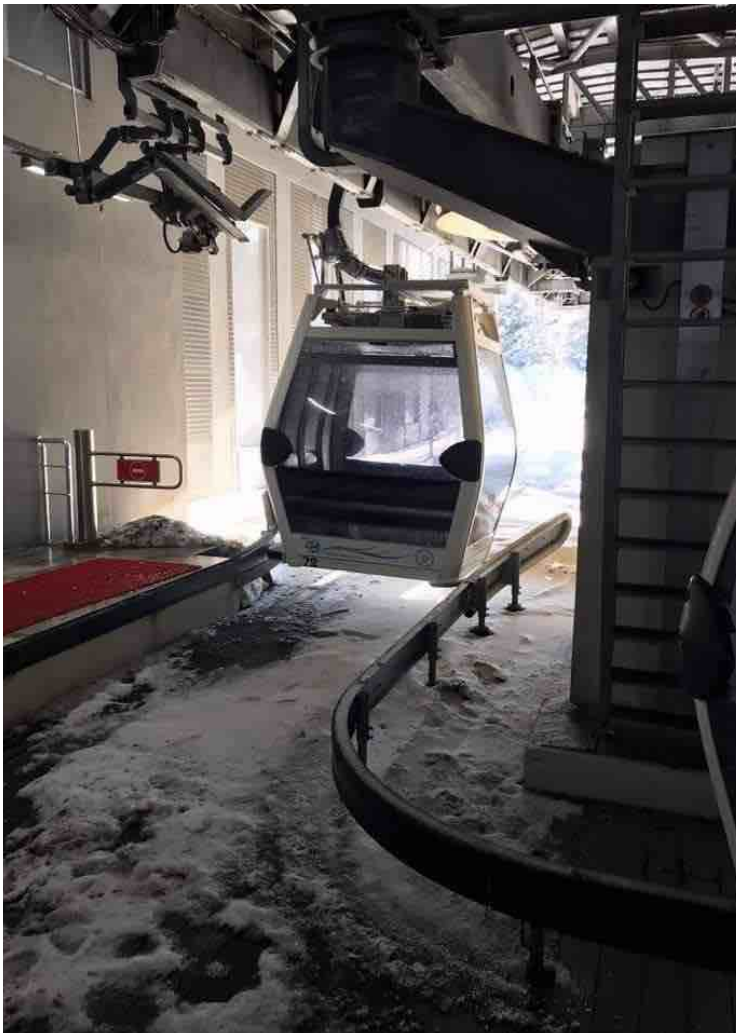


# Public Transport

## Odd One Out

Which one doesn't belong?

1. bus, tram, bicycle, taxi
2. ferry, ship, yacht, cano
3. bullet train, sky train, metro, underground
4. bicycle, tandem, ebike, tricycle



## Scrambled words

The letters in the following words are **mixed/scrambled**. Put the letters in the correct order to form words related to **Public Transport**.

- |          |          |
|----------|----------|
| 1. mrat  | 2. mtore |
| 3. ixat  | 4. ntira |
| 5. yrfer | 6. chaoc |

Talkmor suggestion: See whether you can make sentences with these words.

## Teacher's Key

### Odd one out

1. bicycle - more for relaxation
2. cano - more for relaxation
3. bullet train - runs between cities
4. ebike - works with a battery

### Scrambled Words

1. tram
2. metro
3. taxi
4. train
5. ferry
6. coach

## Teacher's Key

